

Inspection of the tsunami impacted area in American Samoa using high-resolution satellite images  
Disaster Control Research Center, Tohoku Univ.



Damage in a small harbor in Pago Pago.



Inspection of the tsunami impacted area in American Samoa using high-resolution satellite images  
Disaster Control Research Center, Tohoku Univ.



Pre and post tsunami images in Pago Pago. Structural destruction by inland penetration of the tsunami can be interpreted.



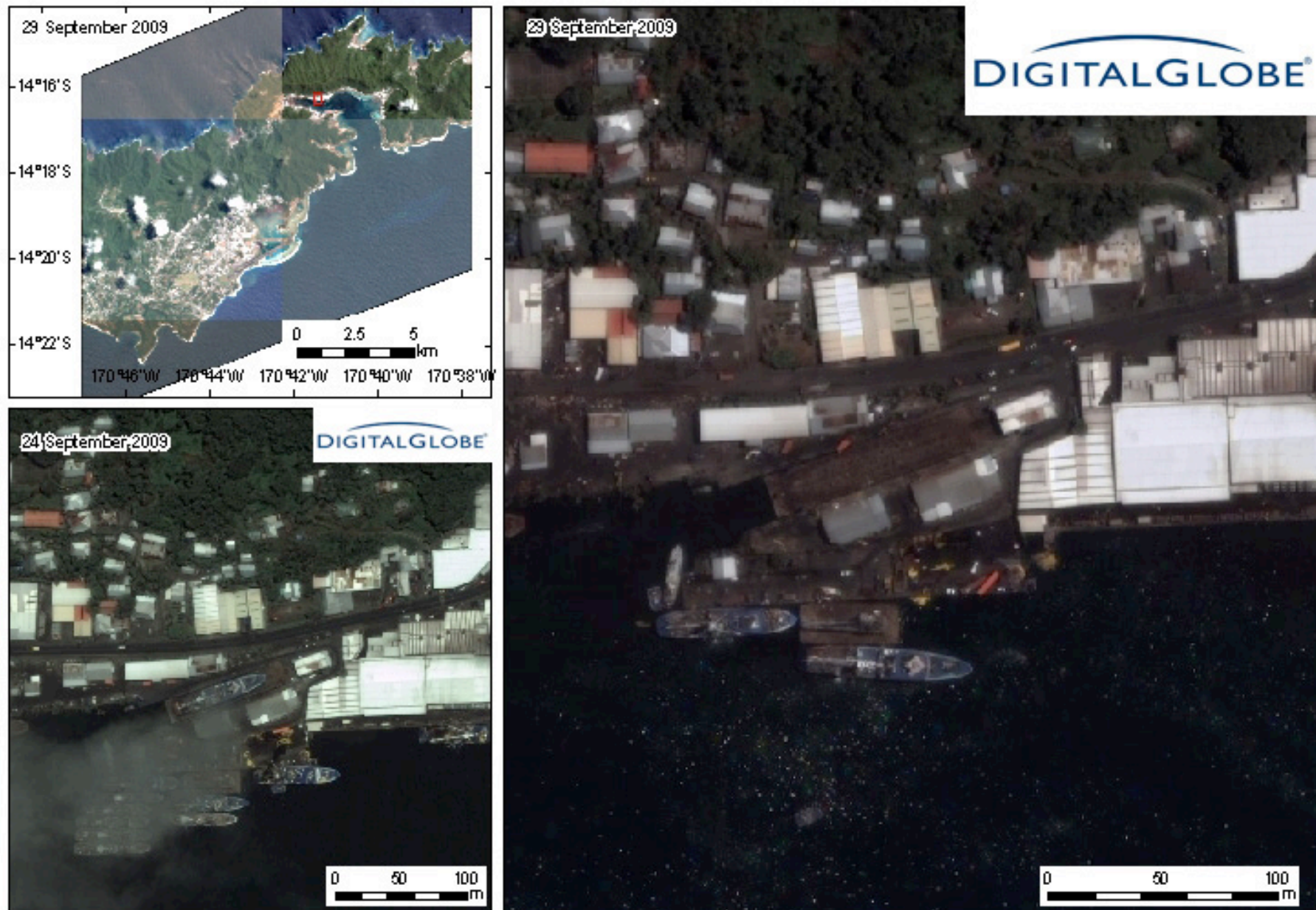
Inspection of the tsunami impacted area in American Samoa using high-resolution satellite images  
Disaster Control Research Center, Tohoku Univ.



Pre and post tsunami images in Pago Pago. Structural destruction by inland penetration of the tsunami can be interpreted.



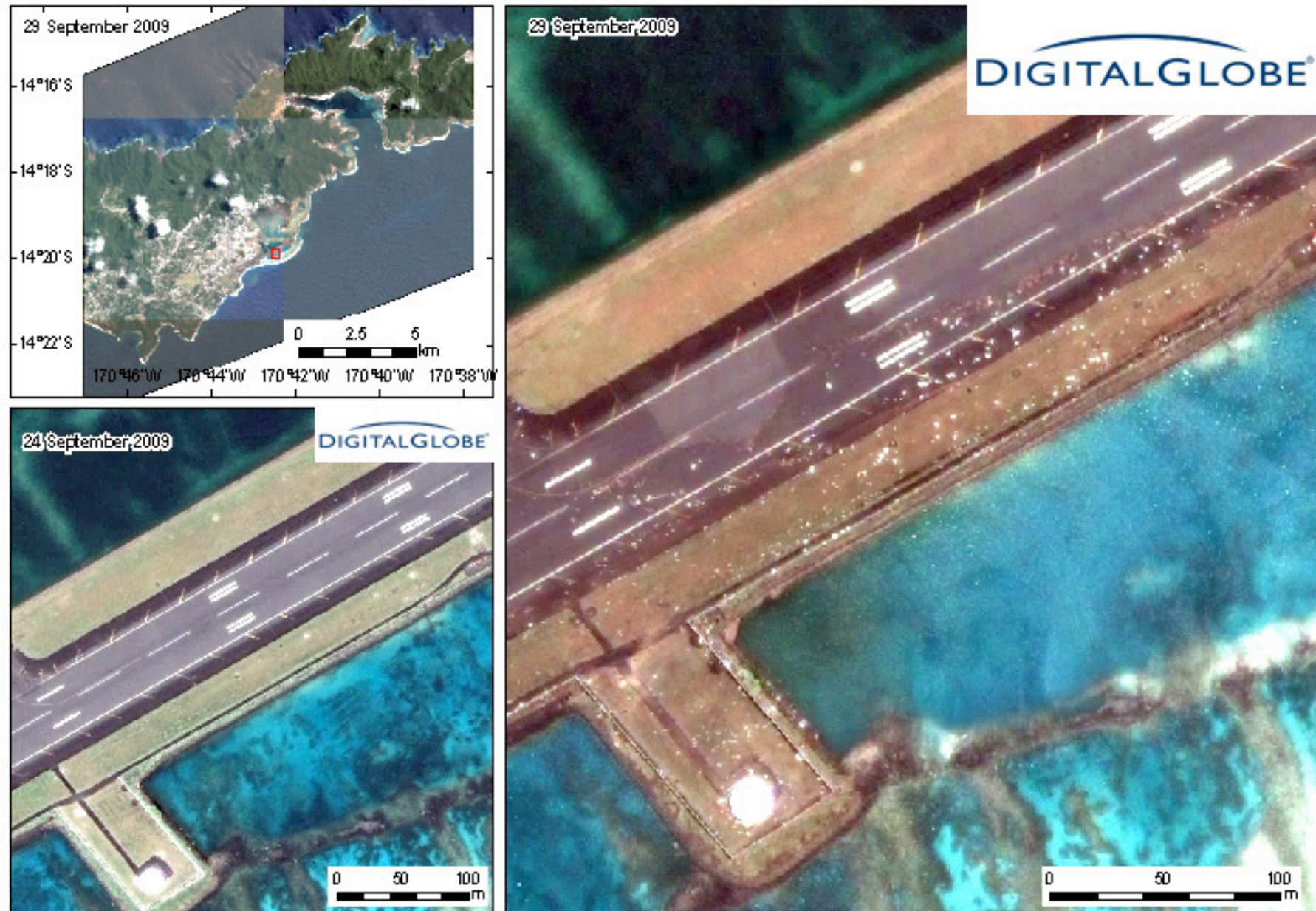
Inspection of the tsunami impacted area in American Samoa using high-resolution satellite images  
Disaster Control Research Center, Tohoku Univ.



A shipyard (?) in Pago Pago. The floating tsunami debris can be found.



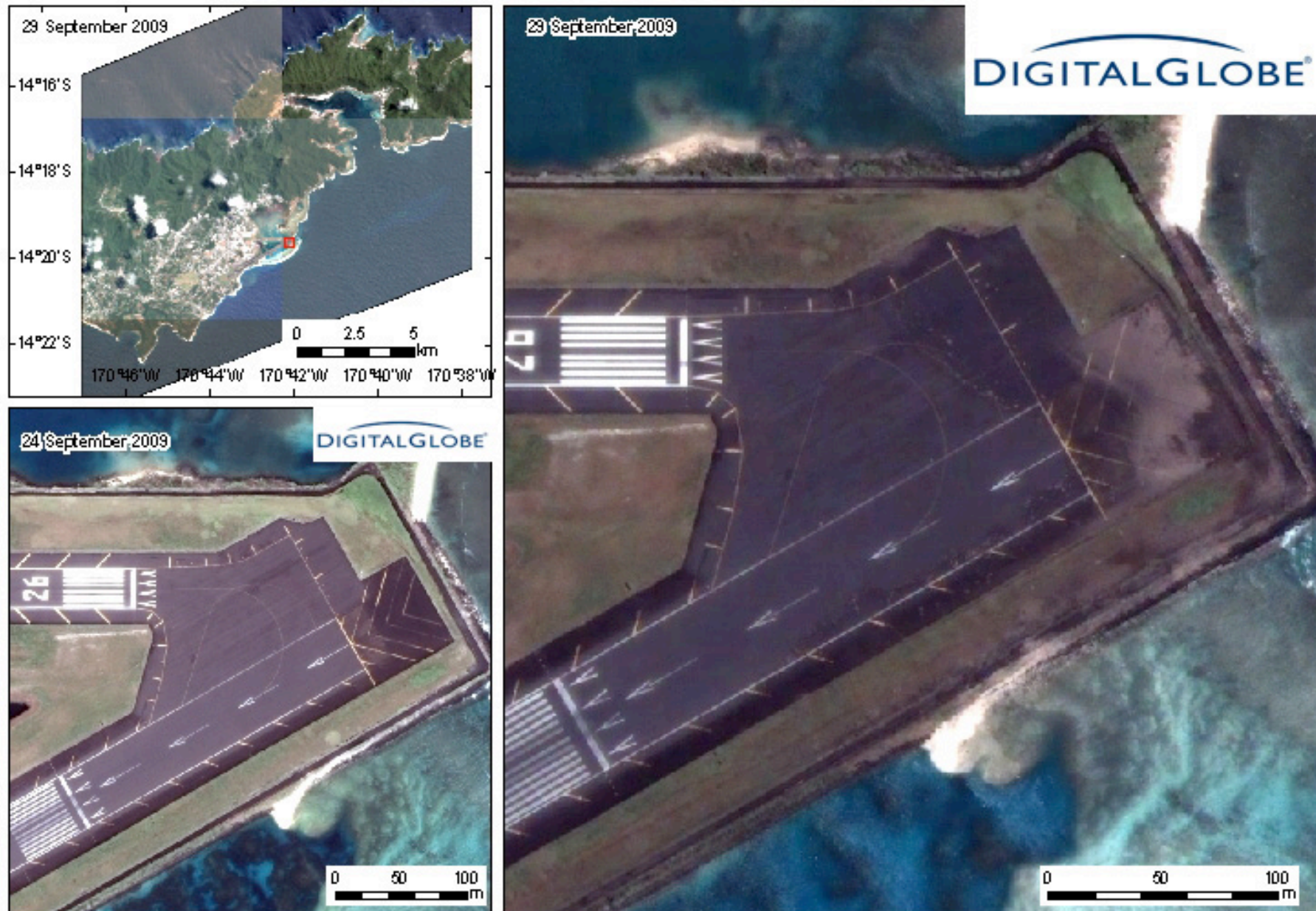
Inspection of the tsunami impacted area in American Samoa using high-resolution satellite images  
Disaster Control Research Center, Tohoku Univ.



Tsunami inundation in Pago Pago international airport. Tsunami debris can be seen on the runway.



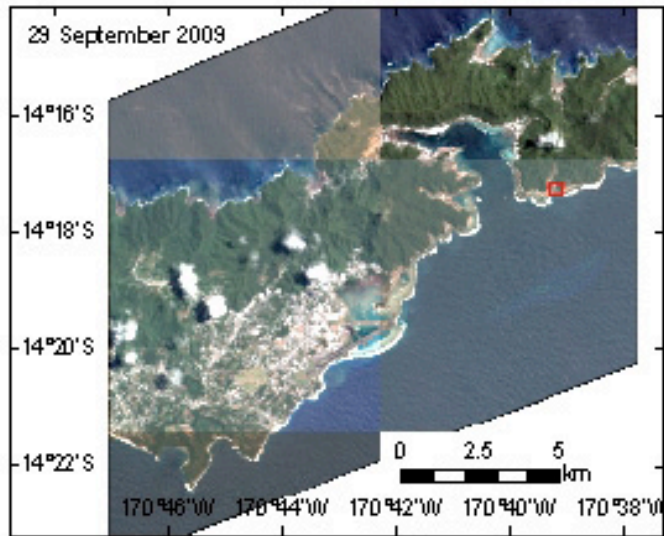
Inspection of the tsunami impacted area in American Samoa using high-resolution satellite images  
Disaster Control Research Center, Tohoku Univ.



Tsunami inundation in Pago Pago international airport. Tsunami debris can be seen on the runway.



Inspection of the tsunami impacted area in American Samoa using high-resolution satellite images  
Disaster Control Research Center, Tohoku Univ.



Geomorphological change (?) at a small river mouth.